

# 2007 ANNUAL PROFILE

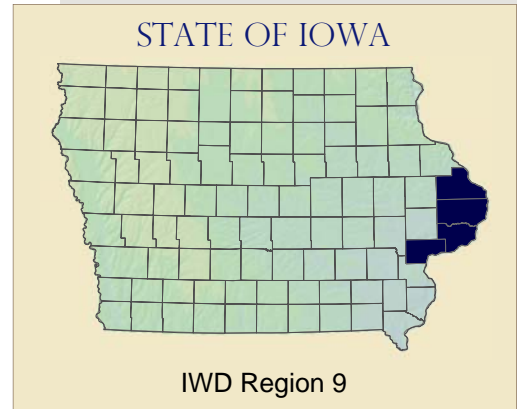
# REGION 9

## IOWA WORKFORCE DEVELOPMENT

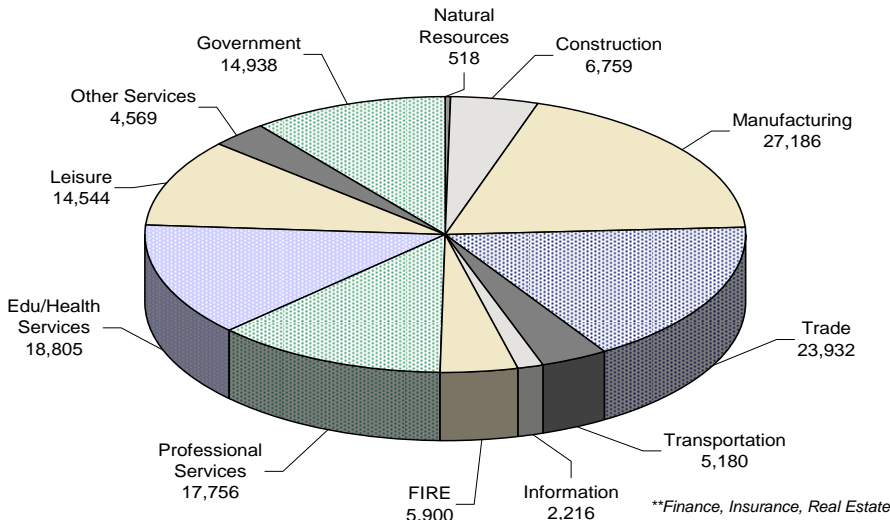
### Executive Summary

As of 2006, Iowa Workforce Development's (IWD) Region 9 largest private industry was Manufacturing, representing 18.6 percent (27,186) of the region's total covered employment of 142,303. The region's total employment increased by 1.1 since 2005, and the average annual wage increased by 2.9 percent to \$33,705 for all industries.

IWD's Region 9 average weekly wage for all industries was \$648 for 2006. This was an increase of 2.9 percent since 2005. The highest average weekly wage for a private sector was in Manufacturing, averaging \$937 with gross total wages of \$1.3 billion. Between 2005 and 2006, the Ag/Natural Resources & Mining sector reported the largest percentage increase in average weekly wage of 7.8 percent (\$38).



### 2006 Industry Breakout by Employment



*Source: Quarterly Census of Employment and Wages*

### Ten Largest Employers by Employment

*Based on Annual 2006 Employment by Private Industry*

Rank	Name of Company	Industry
1	Genesis Medical Center	Health Services
2	Alcoa Inc	Manufacturing
3	Hy-Vee Food Stores	Retail Trade
4	Hon Company	Manufacturing
5	Wal-Mart Stores Inc	Retail Trade
6	Sedona Staffing	Business Services
7	Kraft Pizza Company	Manufacturing
8	Isle of Capri/Rythym City Casinos	Arts & Entertainment
9	Allsteel Inc	Manufacturing
10	Mercy Medical Center	Health Services

*Source: Quarterly Census of Employment and Wages*

### QUICK FACTS

**Counties Included in  
Iowa Workforce Development's  
Region 9**

Clinton                      Muscatine  
Jackson                      Scott

### 2006 Covered Employment (QCEW)

		%
Total Employment	142,303	9.68 <sup>1</sup>
Average Weekly Wage	\$648	98.18 <sup>2</sup>
Largest Private Sector:		
Manufacturing	27,186	11.76 <sup>3</sup>

<sup>1</sup> Percent is based on statewide covered employment of 1,470,744

<sup>2</sup> Percent is based on statewide average weekly wage of \$660

<sup>3</sup> Percent is based on statewide covered employment in specified sector

### Census Statistics

IWD Region 9 Population (2006)	275,576
-----------------------------------	---------

## 2007 IOWA WORKFORCE DEVELOPMENT REGION 9 PROFILE

### 2005 - 2006 Covered Employment and Reporting Units by Industry

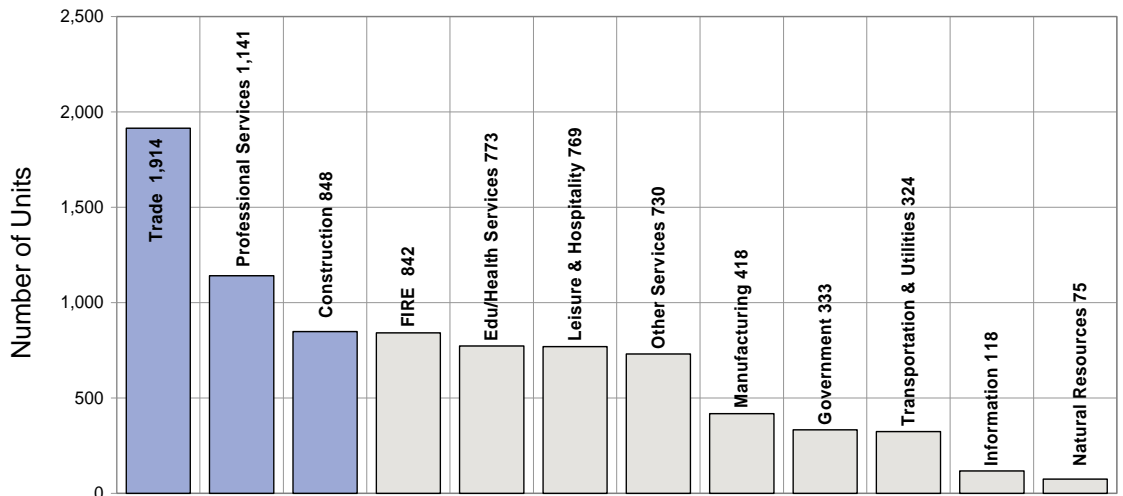
*A Unit is Defined as a Worksite*

Reporting Units				Employment		
2005	2006	% Change		2005	2006	% Change
8,238	8,282	0.53%	Total All Industries	140,703	142,303	1.14%
7,904	7,949	0.57%	Private Business	125,659	127,365	1.36%
71	75	5.63%	Ag/Natural Resources & Mining	515	518	0.58%
844	848	0.47%	Construction	6,445	6,759	4.87%
421	418	-0.71%	Manufacturing	26,125	27,186	4.06%
1,898	1,914	0.84%	Trade	23,956	23,932	-0.10%
687	705	2.62%	<i>Wholesale Trade</i>	5,613	5,602	-0.20%
1,211	1,209	-0.17%	<i>Retail Trade</i>	18,343	18,330	-0.07%
329	324	-1.52%	Transportation & Utilities	5,232	5,180	-0.99%
119	118	-0.84%	Information	2,335	2,216	-5.10%
839	842	0.36%	Finance, Insurance, and Real Estate	5,868	5,900	0.55%
1,116	1,141	2.24%	Professional & Business Services	17,545	17,756	1.20%
777	773	-0.51%	Education & Health Services	18,286	18,805	2.84%
757	769	1.59%	Leisure & Hospitality	14,603	14,544	-0.40%
734	730	-0.54%	Other Services	4,746	4,569	-3.73%
333	333	0.00%	Government	15,044	14,938	-0.70%
55	54	-1.82%	<i>State</i>	705	716	1.56%
230	229	-0.43%	<i>Local</i>	13,453	13,340	-0.84%
49	50	2.04%	<i>Federal</i>	886	882	-0.45%

Source: Quarterly Census of Employment and Wages

### Reporting Units by Industry in 2006

*A Unit is Defined as a Worksite*



Trade - Wholesale & Retail Trade  
F.I.R.E. - Finance, Insurance, & Real Estate

Natural Resources - Agriculture, Natural Resources, & Mining

Source: Quarterly Census of Employment and Wages

#### QUICK FACTS

IWD Region 9's  
Greatest Number of  
Worksites

Wholesale & Retail  
Trade  
1,914

Professional &  
Business Services  
1,141

Construction  
848

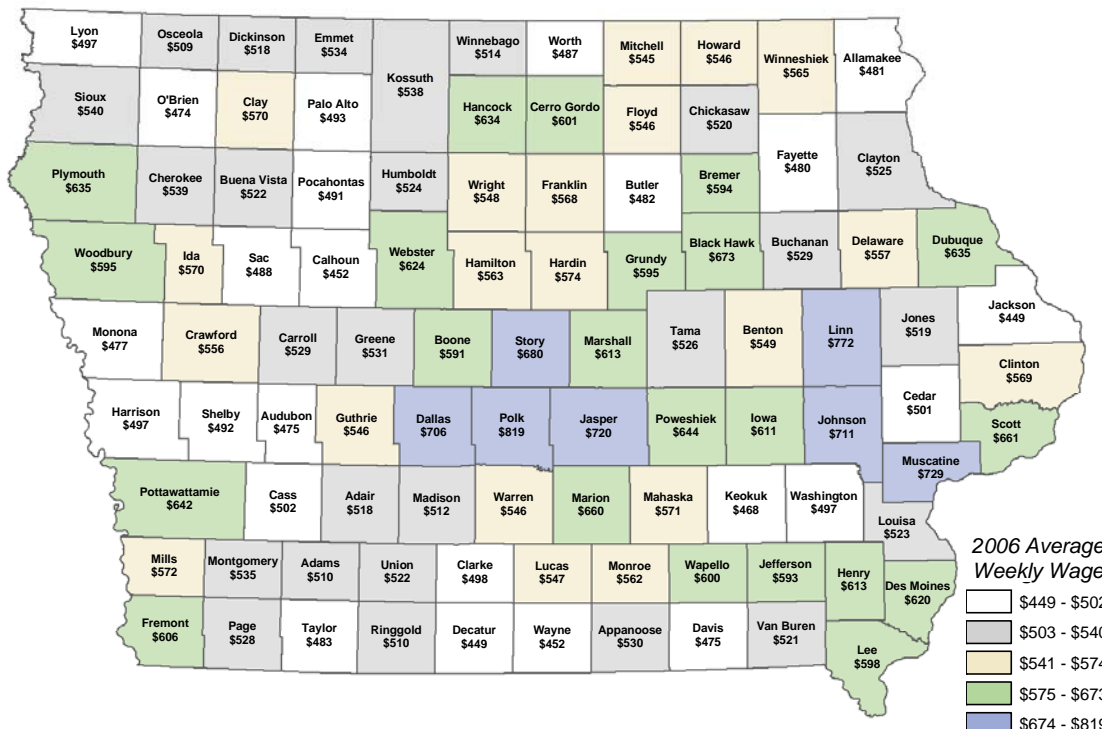
# 2007 IOWA WORKFORCE DEVELOPMENT REGION 9 PROFILE

## 2005—2006 Average Annual and Weekly Wage by Industry

Average Annual Wage				Average Weekly Wage		
2005	2006	% Change		2005	2006	% Change
\$ 32,772	\$ 33,705	2.85%	Total All Industries	\$ 630	\$ 648	2.86%
\$ 32,760	\$ 33,623	2.63%	Private Business	\$ 630	\$ 647	2.70%
\$ 25,285	\$ 27,264	7.83%	Ag/Natural Resources & Mining	\$ 486	\$ 524	7.82%
\$ 38,676	\$ 39,673	2.58%	Construction	\$ 744	\$ 763	2.55%
\$ 48,219	\$ 48,741	1.08%	Manufacturing	\$ 927	\$ 937	1.08%
\$ 27,119	\$ 27,300	0.67%	Trade	\$ 522	\$ 525	0.57%
\$ 44,832	\$ 44,942	0.25%	Wholesale Trade	\$ 862	\$ 864	0.23%
\$ 21,699	\$ 21,908	0.96%	Retail Trade	\$ 417	\$ 421	0.96%
\$ 36,150	\$ 37,656	4.17%	Transportation & Utilities	\$ 695	\$ 724	4.17%
\$ 30,937	\$ 32,394	4.71%	Information	\$ 595	\$ 623	4.71%
\$ 41,745	\$ 43,176	3.43%	Finance, Insurance, Real Estate	\$ 803	\$ 830	3.36%
\$ 31,250	\$ 33,415	6.93%	Professional & Business Services	\$ 601	\$ 643	6.99%
\$ 32,970	\$ 32,853	-0.35%	Education & Health Services	\$ 634	\$ 632	-0.32%
\$ 12,883	\$ 13,091	1.61%	Leisure & Hospitality	\$ 248	\$ 252	1.61%
\$ 20,907	\$ 21,570	3.17%	Other Services	\$ 402	\$ 415	3.23%
\$ 32,879	\$ 34,412	4.66%	Government	\$ 632	\$ 662	4.75%
\$ 39,829	\$ 41,766	4.86%	State	\$ 766	\$ 803	4.83%
\$ 31,469	\$ 32,845	4.37%	Local	\$ 605	\$ 632	4.46%
\$ 48,752	\$ 52,143	6.95%	Federal	\$ 938	\$ 1,003	6.93%

Source: Quarterly Census of Employment and Wages

## Average Weekly Wage for All Industries by County Annual 2006



Source: Quarterly Census of Employment and Wages

### QUICK FACTS

#### Average Weekly Wage Comparisons

IWD Region 9  
\$648

Rank  
Among All 15  
IWD Regions  
3rd

Statewide  
\$660

Nation  
\$818

## 2007 IOWA WORKFORCE DEVELOPMENT REGION 9 PROFILE

### QUICK FACTS

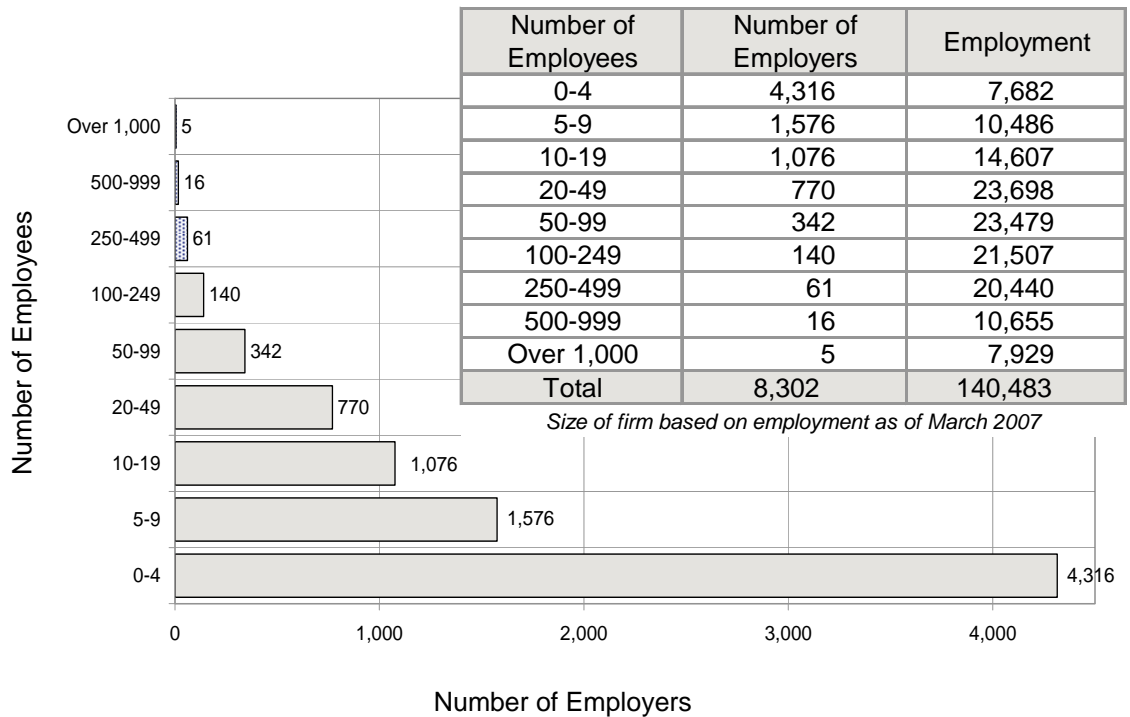
#### Size of Firm

21 firms in Region 9 employ 500 or more workers, totaling 18,584 employees, which accounts for 13.2 percent of total employment in the region.

Firms that employ less than 50 workers represent 93.2 percent of all establishments region-wide.

### Size of Firm Based on Employment

March 2006



Source: Quarterly Census of Employment and Wages

### 2006 Local Employment Dynamics (LED) - Quarterly Workforce Indicators

4th Qtr 2006 and Average of 2006 — All Ownerships

Quarterly Workforce Indicators	Region 9 (Q4)	Region 9 (Avg: 2006)
Total Employment	30,335	29,737
Net Job Flows	-572	113
Job Creation	1,186	1,513
New Hires	3,792	3,856
Separations	5,598	4,862
Turnover	9.30%	8.40%
Average Monthly Earnings	\$2,583.00	\$2,396.50
Average New Hire Earnings	\$1,771.00	\$1,538.75

Quarterly Workforce Indicators	State of Iowa (Q4)	State of Iowa (Avg: 2006)
Total Employment	1,467,228	1,449,165
Net Job Flows	-21,744	6,333
Job Creation	64,529	71,733
New Hires	209,251	214,983
Separations	278,536	255,884
Turnover	10.00%	9.50%
Average Monthly Earnings	\$3,186.00	\$2,991.00
Average New Hire Earnings	\$1,809.00	\$1,823.50

Source: Local Employment Dynamics, [www.iowaworkforce.org/lmi/empstat/ledindex.html](http://www.iowaworkforce.org/lmi/empstat/ledindex.html). For definitions of the Quarterly Workforce Indicators, visit <http://lehd.dsd.census.gov/led/datatools/qwiapp.html> and select the 'i' icon in front of the indicator of interest.

### QUICK FACTS

#### Quarterly Workforce Indicators Definitions

##### Total Employment

Number of workers who are employed by the same employer in both the current and previous quarter

##### New Hires

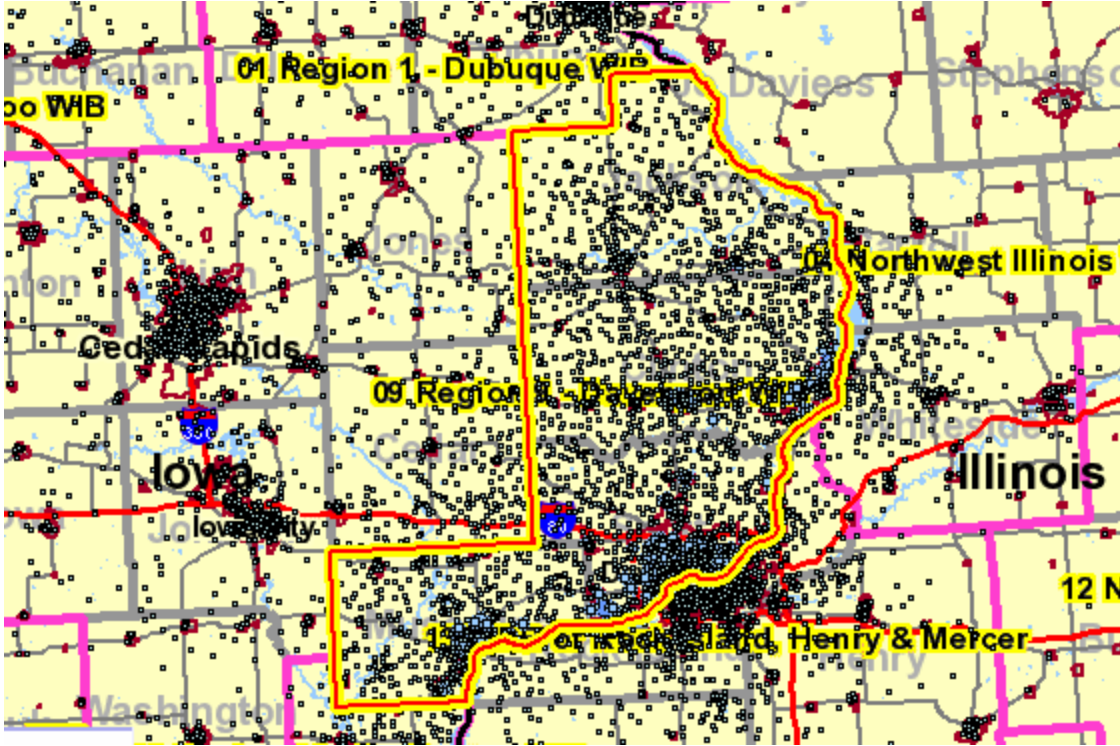
Total number of accessions that were also not employed by that employer during the previous four quarters

For additional definitions see source information below the LED tables

# 2007 IOWA WORKFORCE DEVELOPMENT REGION 9 PROFILE

## ON THE MAP — Region 9

Where Workers Live that are Employed in the Region



For an online tour of the application, please follow this link: [http://lehd.dsd.census.gov/led/datatools/elearning/On\\_the\\_Map/index.htm](http://lehd.dsd.census.gov/led/datatools/elearning/On_the_Map/index.htm).

## ON THE MAP Statistics — Region 9

Distribution of Worker's Age and Monthly Earnings—Private Sector

Baseline Count of Jobs	2004		2003		2002	
	Count	Share	Count	Share	Count	Share
All Primary Jobs	120,221	100.0%	121,124	100.0%	122,170	100.0%

Jobs by Worker Age	2004		2003		2002	
	Count	Share	Count	Share	Count	Share
* Age 30 or younger	32,848	27.3%	32,784	27.1%	33,550	27.5%
* Age 31 to 54	68,842	57.3%	70,251	58.0%	71,321	58.4%
* Age 55 or older	18,531	15.4%	18,089	14.9%	17,299	14.2%

Jobs by Earnings Paid	2004		2003		2002	
	Count	Share	Count	Share	Count	Share
* \$1,200 per month or less	35,741	29.7%	37,443	30.9%	38,668	31.7%
* \$1,201 to \$3,400 per month	49,986	41.6%	52,791	43.6%	54,266	44.4%
* More than \$3,400 per month	34,494	28.7%	30,890	25.5%	29,236	23.9%

Source: Local Employment Dynamics, On the Map: <http://lehdmap.dsd.census.gov/>. For definitions and instruction on this mapping application, visit <http://lehdmap.dsd.census.gov/help.pl> and select any of the "Help" topics.

## QUICK FACTS

'On the Map' Interactive Mapping Application

As of 2004, there were 120,221 primary jobs in this region.

40.5 percent of workers (48,704) live in Scott county, followed by 15.1 percent (18,135) that live in Clinton county and work in Region 9.

## QUICK FACTS

'On the Map' Reports

One of the reports generated from 'On the Map' displays total private sector jobs of 120,221 in Region 9 and the distribution of age and monthly earning of the workers.

41.6 percent of Region 13 workers earn from \$1,201 to \$3,400 per month.

15.4 percent of the region's workers are age 55 and older.

## 2007 IOWA WORKFORCE DEVELOPMENT REGION 9 PROFILE

### Top 20 Growing Industries by Employment 2004 - 2014

Industry Description	NAICS Code	2004 Estimated Employment	2014 Projected Employment	Total Growth	Percent Change
Administrative and Support Services	561	10,410	13,655	3,245	31.17%
Ambulatory Health Care Services	621	5,935	7,760	1,825	30.75%
Nursing and Residential Care Facilities	623	4,075	5,315	1,240	30.43%
Food Services and Drinking Places	722	9,725	10,965	1,240	12.75%
Self Employed and Unpaid Family Workers	671	12,645	13,690	1,045	8.26%
Amusement, Gambling, and Recreation Industries	713	2,865	3,830	965	33.68%
Furniture and Related Product	337	3,140	3,935	795	25.32%
Specialty Trade Contractors	238	4,250	4,995	745	17.53%
Educational Services	616	11,285	11,995	710	6.29%
Social Assistance	624	1,825	2,445	620	33.97%
Hospitals	626	4,415	4,990	575	13.02%
Professional, Scientific, and Technical Services	541	3,370	3,935	565	16.77%
Health and Personal Care Stores	446	1,630	2,050	420	25.77%
Warehousing and Storage	493	1,050	1,455	405	38.57%
General Merchandise Stores	452	3,860	4,260	400	10.36%
Machinery Manufacturing	333	2,835	3,195	360	12.70%
Motor Vehicle and Parts Dealers	441	2,255	2,610	355	15.74%
Religious, Grantmaking, Civic, Professional Orgs	813	2,885	3,220	335	11.61%
Insurance Carriers and Related Activities	524	1,500	1,810	310	20.67%
Management of Companies and Enterprises	551	1,200	1,510	310	25.83%

*Source: Long-Term Industry Projections*

### "Hot Jobs" in Region 9 2004 - 2014

Occupational Title	2004 Estimated Employment	2014 Projected Employment	Region 9 2006 Mean Annual Wage	Annual Growth Rate (%)
<b>Master's Degree or higher</b>				
Pharmacists	310	400	\$86,479	3.1
<b>Bachelor's Degree</b>				
Chief Executives	375	435	\$134,172	1.6
Management Analysts	285	340	\$86,613	1.9
General and Operations Managers	1,400	1,630	\$82,597	1.7
Sales Managers	240	300	\$76,738	2.5
<b>Postsecondary Education (Long-term on-the-job training or work experience in a related occupation)</b>				
Dental Hygienists	260	340	\$61,383	3.1
Plumbers, Pipefitters, and Steamfitters	570	660	49,106	1.6
First-Line Supervisors/Managers of Transportation	265	320	48,492	2.1
Radiologic Technologists and Technicians	225	275	41,113	2.0
<b>High School Diploma or Equivalent (Moderate-term on-the-job training)</b>				
Truck Drivers, Heavy and Tractor-Trailer	2,855	3,310	\$36,943	1.6
Sheet Metal Workers	255	295	36,879	1.6

*Occupations are selected based on growth factors in the IWD Region 9 2004-2014 occupational projections and the 2006 IWD Region 9 mean annual wage. The occupations listed have a higher growth rate than the IWD Regions 9 average of 1.5% and a higher than average IWD Region 9 wage of \$31,515.*

# 2007 IOWA WORKFORCE DEVELOPMENT REGION 9 PROFILE

## Employment and Unemployment Statistics Annual 2006

County	Labor Force	Number Unemployed	Unemployment Rate	Number Employed
Clinton	27,240	1,080	4.0	26,160
Jackson	11,350	540	4.8	10,810
Muscatine	24,190	780	3.2	23,410
Scott	88,810	3,340	3.8	85,470
<b>Total</b>	<b>151,590</b>	<b>5,740</b>	<b>Avg 3.8</b>	<b>145,850</b>

Note: The unemployment rate is widely recognized as an important economic indicator that is used to gauge the vitality of the labor market. The release of the monthly unemployment rate causes markets to react and analysts to speculate on the health of the economy. A low jobless rate indicates a strong economy where job seekers can find employment quickly, whereas a high rate may indicate a weaker economy. On the other hand, businesses can find employees more easily when the unemployment rate is high.

Source: Local Area Unemployment Statistics (LAUS), [www.iowa workforce.org/lni/pressrelease/index.html](http://www.iowa workforce.org/lni/pressrelease/index.html)

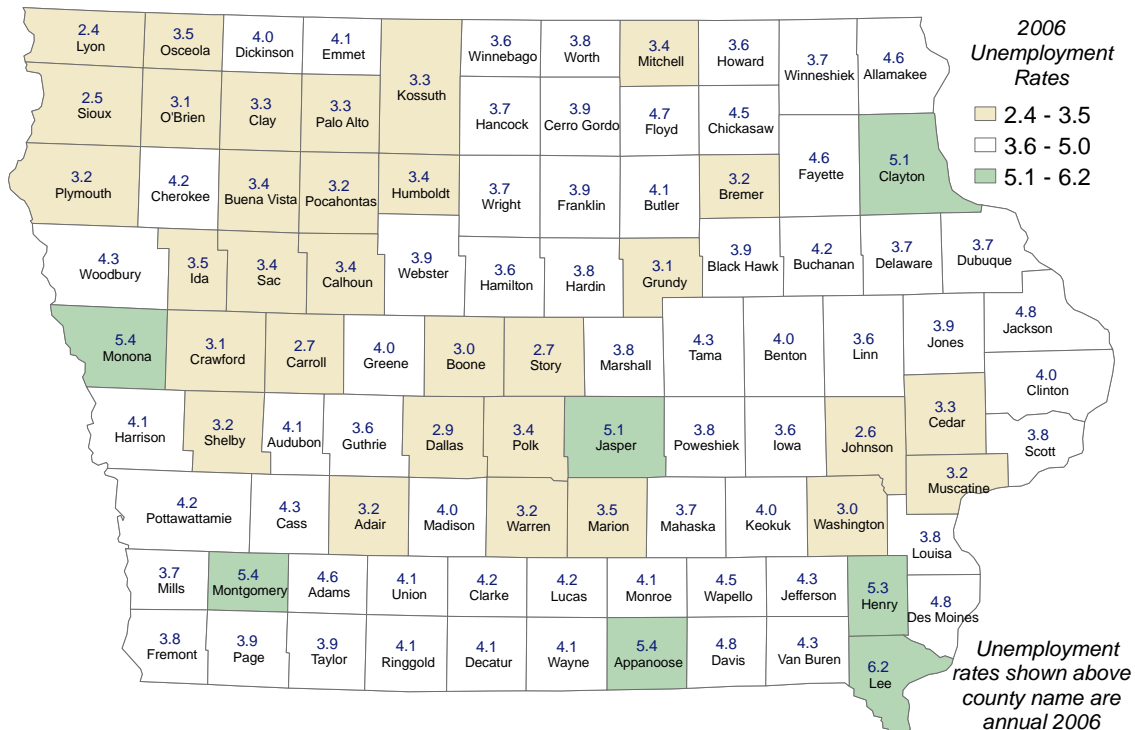
### QUICK FACTS

#### Labor Force 2006

Unemployment averaged 3.8 percent in Region 9 for 2006. The region's jobless rate translated into 5,760 unemployed persons.

The 2006 unemployment rate for Region 9 was slightly higher than the statewide average of 3.7 percent.

## Unemployment Rates per Iowa Counties 2006 Annual Average



### QUICK FACTS

#### County Unemployment Rates

Lee County had the highest jobless rate in the state in 2006 at 6.2 percent.

Lyon County had the lowest jobless rate in the state in 2006 at 2.4 percent

Source: Local Area Unemployment Statistics (LAUS)

