

# Allamakee County, Iowa Laborshed Analysis



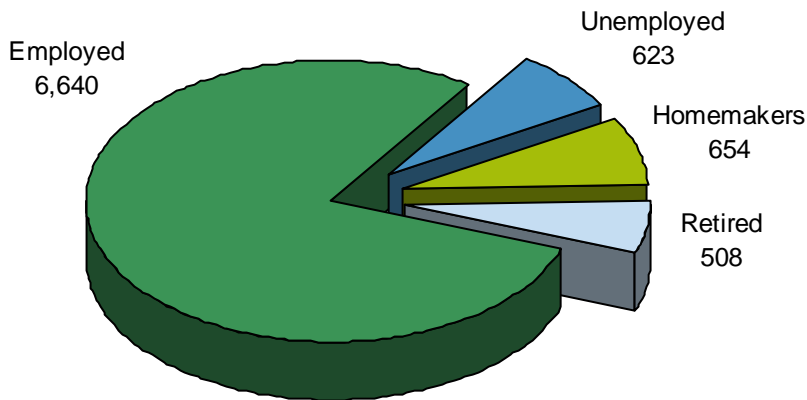
A Study of Workforce Characteristics  
*Released July 2008*

# Laborshed Studies

A Laborshed is defined as the area or region from which an employment center draws its commuting workers. To determine the approximate boundaries of the Allamakee County Laborshed area, local employers supplied the ZIP code listings of where each of their employees reside. This Laborshed analysis addresses underemployment, the availability and willingness of current and prospective employees to change employment within the workforce, current and desired occupations, wages, hours worked, and distance willing to commute to work. See *contact information on back*.

**Total Potential Labor Force: 37,972 (entire Laborshed Area)**

**Estimated Number of Individuals Very Likely or Somewhat Likely to Change or Accept Employment (8,425)**



## Quick Facts:

*(Employed - willing to change employment)*

- 18.7% are working multiple jobs;
- Currently working an average of 44 hours per week;
- Average age is 44 years old;
- 28.1% currently working in the production, construction, & material handling occupational category followed by; 26.0% in the professional, paraprofessional, & technical occupational category;
- Most frequently identified job search sources:
  - Local/Regional newspapers
  - Internet
    - [www.monster.com](http://www.monster.com)
    - [www.iowaworkforce.org](http://www.iowaworkforce.org)
  - Networking through friends, family, or acquaintances
  - Local Iowa Workforce Development Centers

## Underemployment:

The underemployed are composed of individuals who are working fewer than 35 hours per week but desire more hours; working at wages equal to or less than the national poverty level; and/or who are working in positions that do not meet their skill or education levels or worked for higher wages at previous employment.

- 1.7% Inadequate hours (113 people)
- 2.2% Mismatch of skills (146 people)
- 2.7% Low income (179 people)
- 5.4% Total estimated underemployment (359 people)

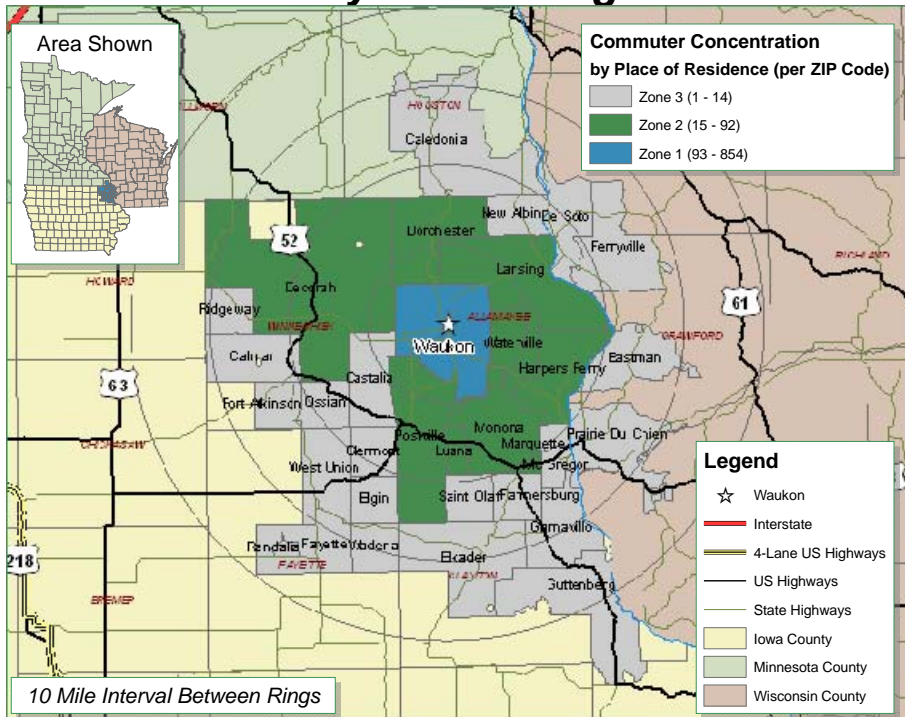
*Individuals may be underemployed for more than one reason; but are only counted once for total estimated underemployment.*

## Industrial Classification of the Employed

Industry	% of Laborshed	# of Employed
Education	17.5%	5,582
Manufacturing	15.4%	4,912
Health Care & Social Services	14.5%	4,625
Wholesale & Retail Trade	12.1%	3,860
Agriculture	9.2%	2,935
Public Administration & Government	8.0%	2,552
Transportation, Communication, & Utilities	5.6%	1,786
Finance, Insurance, & Real Estate	5.3%	1,691
Construction	5.0%	1,595
Personal Services	4.4%	1,403
Professional Services	2.7%	861
Entertainment & Recreation	0.3%	96

Survey respondents from the Allamakee County Laborshed area were asked to identify the industry in which they are currently working. The largest concentration of workers are employed in education as shown in the table at left.

# Allamakee County Commuting



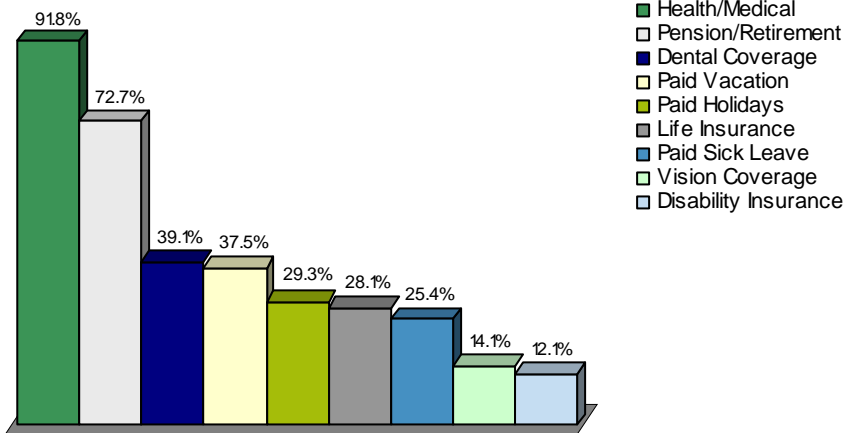
## Commuting Statistics

The map at the left represents commuting patterns into Allamakee County with the concentration per ZIP code represented in the legend.

Those who are willing to change employment in the Allamakee County Laborshed area are willing to commute an average of 24 miles one way for employment opportunities.



## Benefits Currently Offered



The survey provides the respondents an opportunity to identify employment benefits they currently are offered. The chart at left provides the percentage of responses from those that are currently employed. The top nine benefits are shown.

The majority (67.4%) of respondents are currently sharing the cost of premiums with the employer. However, 27.5 percent of the employers in the area pay the entire cost of insurance premiums as a benefit for their employees.

## Education and Median Wage Characteristics by Industry

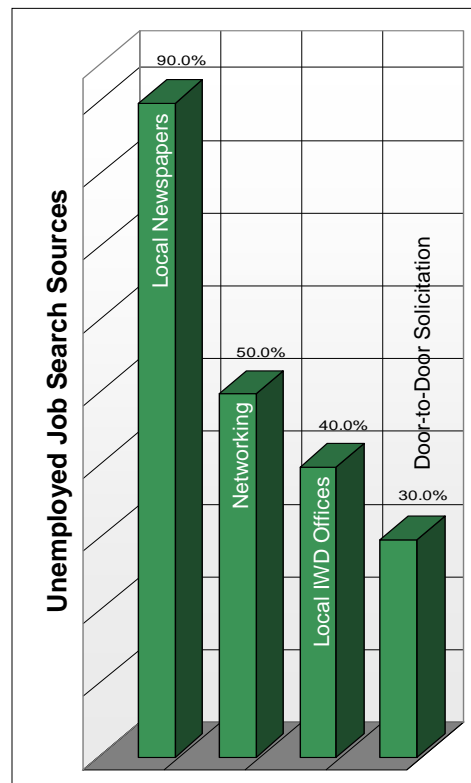
Industry	Education			Median Wages	
	Some Level Beyond High School	Associate Degree	Undergraduate Degree or Higher	Salary Wages (per year)	Non-Salary Wages (per hour)
Agriculture	45.5%	12.1%	24.2%	\$40,000	\$12.00
Construction	50.0%	4.5%	4.5%	\$31,500	\$17.50
Manufacturing	35.4%	9.2%	6.2%	\$43,000	\$12.19
Transportation, Communication, & Utilities	71.4%	14.3%	28.6%	\$70,000	\$15.00
Wholesale & Retail Trade	61.2%	10.2%	20.4%	\$48,000	\$8.50
Finance, Insurance, & Real Estate	73.7%	36.8%	15.8%	*	\$11.65
Health Care & Social Services	76.4%	18.2%	23.6%	\$36,000	\$12.92
Personal Services	65.0%	10.0%	20.0%	\$33,500	\$11.50
Entertainment & Recreation	*	*	*	*	*
Professional Services	61.5%	*	30.8%	\$40,000	*
Public Administration & Government	74.2%	6.5%	54.8%	\$50,000	\$17.00
Education	86.8%	8.8%	69.2%	\$42,000	\$9.78

This table includes all respondents without consideration of employment status or willingness to change/enter employment.

\*Insufficient survey data/refused

## Unemployed - Those Willing to Enter/Re-enter Employment:

- An estimated 623 unemployed individuals are willing to accept employment;
- Average age is 44 years old;
- Education:
  - 60.0% have an education beyond high school
  - 10.0% have an associate degree
  - 20.0% have an undergraduate degree
  - 10.0% have an postgraduate/professional degree
- Estimated wage range to attract the upper 66-75% qualified hourly wage applicants is \$9.60 to \$15.00/hr. with a median of the lowest wage of \$8.00/hr.;
- Willing to commute an average of 33 miles one way for the right opportunity;
- 80.0% expressed interest in seasonal and 60.0% in temporary employment opportunities;
- 60.0% are interested in working varied shifts (2nd, 3rd & split);
- Would prefer to enter employment that offers the following benefits:
  - Health/medical insurance
  - Pension/retirement options
  - Dental coverage
  - Vision coverage
- 33.3% of the unemployed are seeking employment offers where the employer/employee share the cost of medical insurance premiums.



## Sponsored in Partnership with



*Community partner*



Aquila

**For more information regarding the Allamakee County Laborshed Study, contact:**

Allamakee County Economic Development  
101 W. Main Street  
Waukon, IA 52172  
Phone: 563-568-2624 / 800-824-1424  
Fax: 563-568-6990  
Email: [aced@mchsi.com](mailto:aced@mchsi.com)  
[www.allamakeecounty.com](http://www.allamakeecounty.com)



This information is analyzed and compiled by the  
Iowa Workforce Development  
Research & Performance Planning Bureau  
1000 E. Grand Avenue, Des Moines, Iowa 50319  
(515) 281-4896  
[www.iowaworkforce.org](http://www.iowaworkforce.org)